

# ClockedIn

Time & Attendance Systems



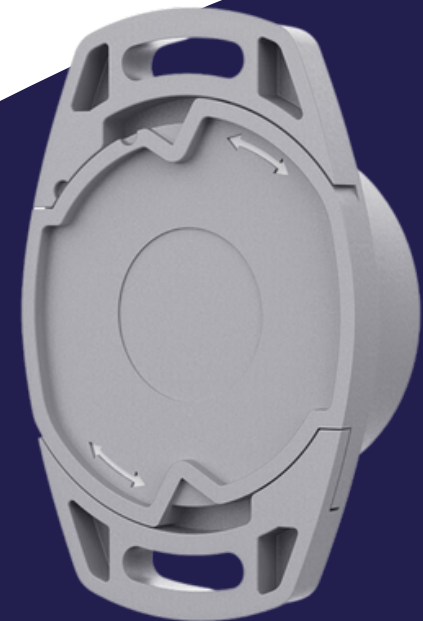
**The ClockedIn Beacon Terminal is used for increased accuracy within a close proximity area. With its multi installation methods and robust enclosure, it can be deployed in a factory, warehouse, building and other indoor or outdoor settings.**

- Rugged design with IP67 waterproof rating for indoor and outdoor use
  - Supports Apple iBeacon and Google Eddystone (UID, URL, TLM)
    - Hardware is compatible with Bluetooth 5.1
      - Various installation methods
      - Range of up to 160 meters
        - Replaceable battery



## Features

Main Chip	Nordic nRF52811
Bluetooth	Bluetooth 4.2 (hardware compatible with Bluetooth 5.1)
Range	Up to 160 meters (in the open area and no obstacles)
Dimensions/Weight	70mm x 46mm x 21mm / 33.5g (With battery)
Material/Colour	ABS+PC / Grey
Waterproof rating	IP67
Installation	3M Sticker or Screws
Power on/off	Press inner mechanical button Magnet approaching to pull-down hall effect sensor
LED	Single red LED





## Power/Operating Functions

Sensor	Omni polar Hall-effect sensor for magnetic switch 3-axis accelerometer sensor (optional)
Sensor sampling	Broadcast or notify the 3-axis G-sensor data in real time (with 3-axis G-sensor)
Operating temperature	General -20°C / + 60°C
Storage temperature	-20°C / +70°C (without battery) -10°C / +25°C (with battery)
Humidity	0% ~ 95% (non-condensing)
Power Supply	Replaceable 1000mAh lithium coin CR2477 battery
Average Current	21uA (Default settings*, without 3-axis G-sensor) 28uA (Default settings*, with 3-axis G-sensor and motion detection is always active)
Lifetime	4 years (Default settings*, without 3-axis G-sensor) 3 years (Default settings*, with 3-axis G-sensor and motion detection is always active)
Certification	USA (FCC), Europe (CE-RED, CE-LVD, CE-EMC, REACH, RoHS)

- Default Settings - 1 active slot, 1000ms ADV interval and 0 dBm Tx power

# ClockedIn

Time & Attendance Systems



**Contact Us**  
020 3371 1006  
[info@clockedin.co.uk](mailto:info@clockedin.co.uk)

